



24 Albert Embankment, London  
SE1

GARTON JONES.COM



# 24 Albert Embankment, London , SE1

GARTON JONES.COM

9 Albert  
Embankment  
London  
SE1 7SP

Sales +44 (0) 20 7735 1888  
nineelms@gartonjones.com  
www.gartonjones.com

## £725 Per Week

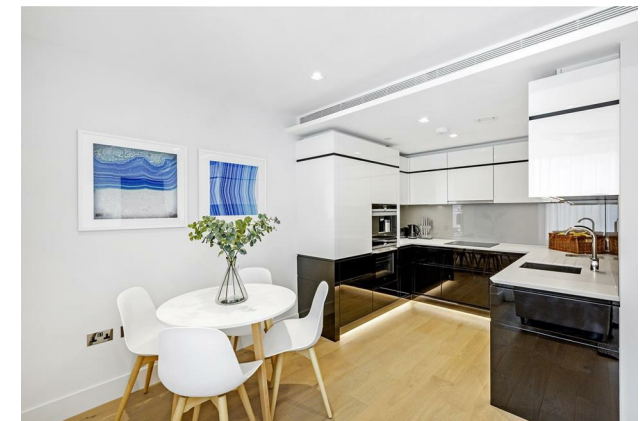
A spacious 1-bedroom apartment of approx.. 526sq.ft (48.87sq.m) available to rent in The Corniche, a landmark riverside development by St James, located on the South Bank of the River Thames. This 8th floor apartment comprises an open plan reception room with fully fitted interior designed kitchen, a luxury bathroom, and a utility cupboard with good storage.

Designed by the internationally acclaimed architectural practise, Foster and Partners, residents further benefit from a 24-hour concierge service, a Skyline Club Lounge with a terrace enjoying amazing London views, there is an extensive health and wellness suite offering spa treatments, a gymnasium with private training facilities and an indoor infinity pool and screening room plus a screening room, games room and ten-pin bowling. You will be within easy reach of many local shops, bars and restaurants and transport links are also excellent.

Please note furniture may differ to that shown in the current photos.

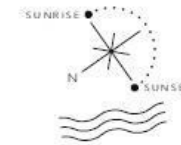
- Electricity Supply — Mains | Water Supply — Mains | Sewerage — Mains | Heating — Comfort Cooling
- Broadband & Mobile Signal : Check Coverage via Ofcom
- Parking: No Parking Included
- Lift Access
- Building Safety: EWS1 Available on Request
- Council Tax Band F (London Borough of Lambeth)
- 5 Week Security Deposit
- Holding deposit equivalent to 1 week of rent
- Rent to be payable monthly in advance
- EPC Rating B (84)

- 1 Bedroom
- 526sq.ft (48.87sq.m)
- Open Plan Reception
- Bathroom
- Comfort Cooling
- Residents Gym
- 24 Hour Concierge
- Swimming Pool, Spa, Sauna & Steam Room Facilities
- 19th Floor Residents Lounge & Bar
- 0.4 Miles to Vauxhall Station



EPC certificate available on request.

## ONE BEDROOM APARTMENT



TYPE 3												
Apartment	3	10	17	24	31	38	44	49	54	59	64	69
Level	2	3	4	5	6	7	8	9	10	11	12	13
Living Room	4.83 x 4.30m						15'1" x 14'1"					
Kitchen	2.73 x 2.30m						9'0" x 7'7"					
Bedroom	3.57 x 3.00m						11'9" x 9'10"					
Total Internal Area	48.87 m <sup>2</sup>						526.0 ft <sup>2</sup>					

KEY  
W Wardrobe  
C Cupboard  
U Utility



